



Vault Doors

Grades III-IV-V-VII-VIII-IX-X

Standard EN 1143-1



Ferrimax Vault Doors have been developed to comply with the EN 1143-1 European standard, obtaining the grades III, IV, V, VII, VIII IX and X.

Our manufacturing process has been certified by **Applus**, guaranteeing that the delivered product has the same construction features than the tested one.



Construction features

The protection structure of the Ferrimax Vault Doors depends on each grade. This protection is made up of high-resistance composites with metallic fibres and several layers of reinforcing armours inserted into their body, which give the doors a strong resistance faced to mechanical or thermal attacks.

The Spanish Association for Standardization and Certification (AENOR) certifies that the quality management system adopted by Ferrimax, s.a. for the design, the manufacturing, the commercialisation, the after sales service and maintenance of safes and physical security products, complies with the requirements of the Standard EN ISO 9001:2000.



Grade	Model	Certificate
III	PF-100 (TS-100, PF+TS-100)	PR-0181/007
IV	PF-100 (TS-100, PF+TS-100)	PR-0182/007
V	PF-100 (TS-100, PF+TS-100)	PR-0183/007
VII	PF-150	PR-0172/007
VIII	PF-150	PR-0173/007
VIII	PF-300	PR-0184/007
IX	PF-400	PR-0174/007
X	PF-500	PR-0185/007

Vault Doors

Grades III-IV-V-VII-VIII-IX-X
Standard EN 1143-1



Locking devices

These are distributed all throughout the surface of the door and protected by special alloy metal armour plating as well as by automatic relocking systems, which in the event of an attack activate the whole locking system.

The number and diameter of the bolts depends on the grade and model of the vault door, ranging between 7 bolts of 30 mm and 16 bolts of 50 mm.

Grade III: one key lock double paddle class II VdS / B EN 1300. A mechanical or electronic combination lock can also be installed as an option.

Grade IV and V: two class II VdS / B EN 1300 locks.

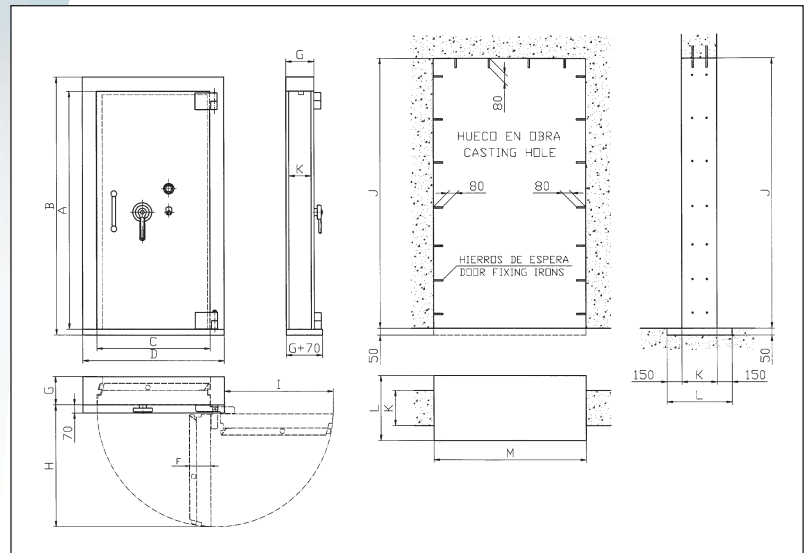
Grade VII, VIII, IX and X: two class III VdS / C EN 1300 locks.

Locking devices option

- CESAR class II VdS time delay and time lock
- Pre fitting for alarm connection system
- Emergency opening system
- Anti hold-up system

Options

- Emergency doors
- Vault door with incorporated emergency door
- Grille gates



Dimensions

Model	Grade	Dimensions												Free clearance	Weight (kg) approx.
		A	B	C	D	F	G	H	I	J	K	L	M		
P/A 100	III	2020	2140	960	1100	150	175	1040	970	2300	150	450	1360	2000 x 900	550
	IV														600
	V														755
P/A 150	VII	2030	2200	970	1210	190	240	1050	935	2350	200	500	1500	2000 x 900	1100
	VIII														1400
P/A 300	VIII	2045	2275	1005	1365	310	350	1080	900	2450	300	600	1800	2000 x 900	1500
P/A 400	IX	2045	2275	1030	1410	410	450	1105	915	2450	400	700	1800	2000 x 900	2400
P/A 500	X	2045	2275	1070	1470	510	550	1145	950	2450	500	800	1800	2000 x 900	3000
T/A 100	III	540	700	450	610	150	175	490	405	830	-	-	850	500 x 395	90
	IV														105
	V														127
T/A 150	VII	590	835	580	825	190	240	660	545	1110	-	-	1380	515 x 530	260
	VIII														285
T/A 300	VIII	605	965	710	1070	310	350	790	605	1240	300	-	1600	605 x 505	440
T/A 400	IX	605	965	710	1070	410	450	790	605	1240	400	-	1600	605 x 505	490
T/A 500	X	605	965	710	1070	510	550	790	605	1240	500	-	1600	605 x 505	550

Distributed by



www.ferrimax.com

MANUFACTURING PLANT IN BARCELONA

Tel +34 93 460 16 96

comercial@ferrimax.es · export@ferrimax.com

BRANCH OFFICE IN MADRID

Tel +34 91 796 08 96 · madrid@ferrimax.es